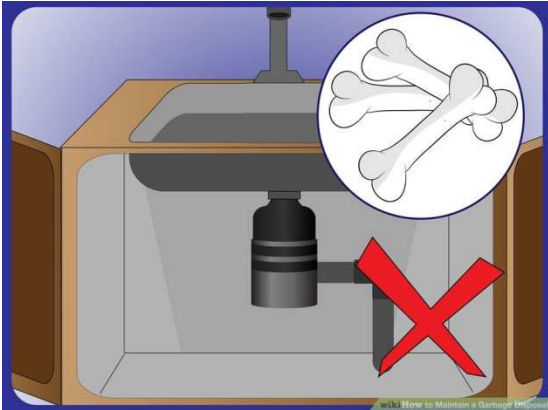


# How to Maintain a Garbage Disposal

A **garbage disposal**, also known as waste disposal unit or garburator, is a device underneath a sink that shreds food waste so that it can pass through plumbing. A garbage disposal is a great way to keep the smells of old garbage out of your garbage cans and **kitchen**.

## Keep anything too hard out of the disposal.



The shredder will dull and become less efficient. Small hard objects can also get stuck and jam the rotating parts. Each garbage disposal has its own capacity for hard objects. The more expensive models of the same brand tend to have higher hardness capacities. The instruction manual usually specifies a list of objects to avoid. You can also gain experience with your own garbage disposal. Strong vegetable fibers can jam some garbage disposals, as well. If something may be

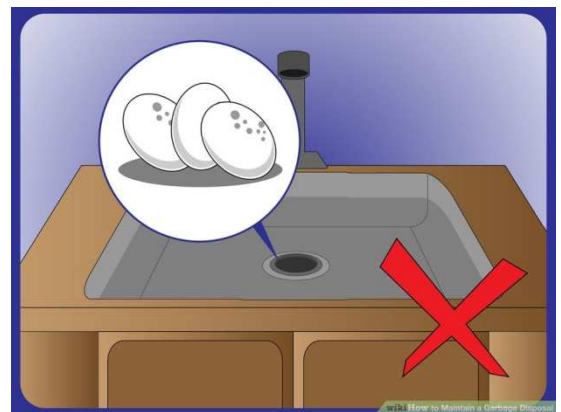
harder than what the disposal handles, just put it in your trash can. Some items to avoid are:

- hard shells from shrimp, crabs and other shellfish
- unpopped popcorn kernels
- hard bones

## Do not put fibrous or starchy items in the disposal.

Both can cause particularly stubborn drain blockages (fibers get tangled, and starches get thick). The following items should be put in the disposal in minimal increments, preferably cut into small pieces, or not at all:

- banana peels
- celery
- potato peelings
- corn husk or corn cobs
- artichokes
- coffee grounds (in quantity) or coffee filters
- fruit pits and hard seeds from things like avocados or peaches
- onion skins (unless you're especially careful to completely remove the thin membranes of each, which can wrap around the shredder ring)
- egg shells should not be put in the disposal as they turn into a sand-like substance that clogs piping.



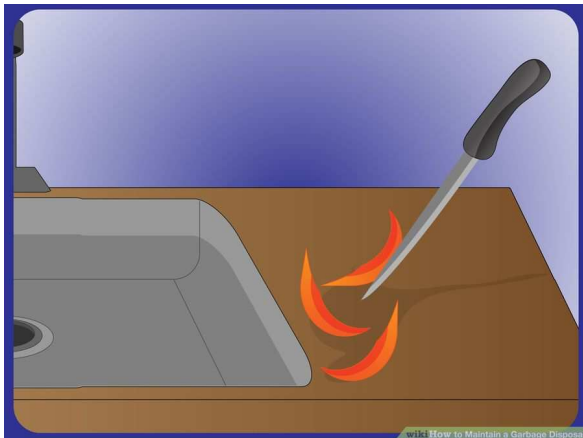
## Avoid placing trash or hard items down the disposal.

Common sense will go a long way, but here are some examples of items to avoid:

- twist ties, pull tabs, rubber bands
- glass, screws, nails,
- utensils
- fabric, string, rags, or sponges
- plant or flower clippings
- children's toys
- hair
- cigarette butts or bottle caps, paper, plastic, or other trash
- grease



## Cut large items into smaller pieces.



If they are too large, like the skins of melons, cut them into smaller pieces and put them one at a time into the disposal instead of trying to shove a large amount in at once.

If you find yourself with a lot of larger pieces to cut up, it may be best to place them in the compost or trash instead.

## Run cold water while the disposal is on.

Keep disposer and water running for 30 to 60 seconds AFTER the waste matter has cleared *your* drain. The waste still has a distance to go. Cold water keeps the motor, bearings and shredder assembly from overheating. It also lets the waste go down easier because the water is pushing it down. Don't use hot water, because it can melt fat and allow it to re-solidify as a blockage further down in the drain.



## Clean it regularly.



⚙ With the disposal off, clean the inner side of the rubber in the center of the sink leading to the disposal. It gets very dirty, and gives off an odor when not cleaned. Just wipe it with a paper towel.

⚙ Throw some ice down once in a while. While ice will not sharpen the shredders (as is commonly believed) it *does* knock off any debris buildup on the sharp edges that keeps them from grinding food properly. For better results, make special ice cubes from pure lemon juice or vinegar, or alternate with biodegradable cleanser (label them in your freezer!) Cover and seal ice trays used in

your freezer for cleanser, and do not reuse trays for food or drink after having been used for cleanser. While using the disposal, be sure to run cold water at the same time.

⚙ Dispose **orange peels**, or any citrus rinds, to freshen the disposal and keep it smelling clean, but cut them into slices first as large pieces of citrus peel, e.g. half a lime, can jam a disposal. You can also use pieces of citrus fruit that may be too old to consume, as long as they're not too spoiled to smell nice. You can freeze these pieces first, if you wish.

## Tips

- Read the directions for your model before attempting a home repair. Most disposals have an electrical reset button, and a manual hex key for un-jamming. If the disposal stops working, its internal circuit breaker may have shut it off. Turn the switch definitely off, and try to pull out the hard object that may have jammed it. Then use the right-sized hex key to manually turn the rotor parts (usually directly under the unit in the center). If it turns, then push the reset button. It usually clicks in. Then, turn on the water and try the power, again.
- If the disposal jams, turn off the power and look underneath the sink. There is a place in the center of the motor shaft, on the bottom of the unit, where you can use an allen wrench to manually turn the motor. Give the motor a few manual turns to get it unstuck. Remove the Allen wrench before you try to run the motor again. Also, press the reset button/ circuit breaker on the bottom of unit, if applicable.
- Read the directions for your model before attempting a home repair. Most disposals have an electrical reset button, and a manual hex key for un-jamming. If the disposal stops working, its internal circuit breaker may have shut it off. Turn the switch definitely off, and try to pull out the hard object that may have jammed it. Then use the right-sized hex key to manually turn the rotor parts (usually directly under the unit in the center). If it turns, then push the reset button. It usually clicks in. Then, turn on the water and try the power, again.
- Garbage disposals are noisy, somewhat unreliable since you cannot always know exactly what will go down and what will not. A great alternative is a trash can with a lid that seals in the smells. Keep it right next to the counter by your sink so the waste can go right into it from over the counter.
- Composting is a great alternative to using your disposal. When done properly, it doesn't create odors—it creates rich fertilizer for your garden or potted plants.

## OPERATING INSTRUCTIONS

### CONTINUOUS FEED DISPOSERS

1. Remove stopper from sink opening and run strong flow of cold water.
2. Turn on wall switch to start disposer.
3. Slowly insert food waste into disposer and position stopper to minimize possible ejection of material while grinding (see Figure A).
4. After grinding is complete, turn disposer off and run water for at least 15 seconds to flush drain line.

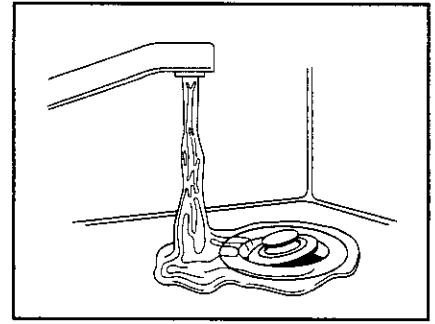


Figure A

### BATCH FEED DISPOSERS

Batch feed disposers differ from continuous feed models in that the batch feed on/off switch is built into the disposer and activated by the stopper. (See **Instruction 1, Installation Dimensions** chart, for model reference.)

1. Read important safety instructions contained in the Installation, Care & Use manual.
2. Remove stopper from sink opening and place food waste into disposer grind chamber. Do not pack chamber with waste. Place stopper back in sink opening. Run a strong flow of cold water.
3. Turn on disposer by lifting stopper slightly and turning to left or right until disposer starts. (See Figure B; *Seal* - Completely in, *Drain* - Lift 1/4 inch and turn, *Start* - Turn fully left or right.)
4. After grinding is complete, turn disposer off by removing the stopper and allow water to run for at least 15 seconds to flush drain line.

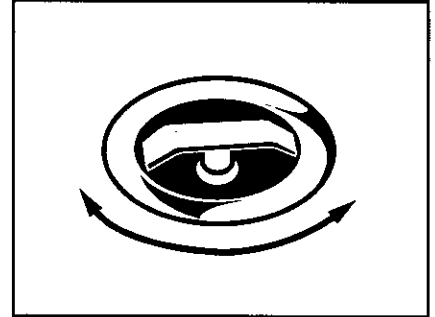


Figure B

### DO...

- First turn on a moderate to strong flow of cold water and then turn on the disposer. Continue running cold water for 15 seconds after grinding is completed to flush the drain line.
- Grind hard materials such as small bones, fruit pits, and ice. A scouring action is created by the particles inside the grind chamber.
- Grind peelings from citrus fruits to freshen up drain smells.
- Use a disposer cleaner, degreaser, or deodorizer as necessary to relieve objectionable odors caused by grease build-up.

### DON'T...

- Don't pour grease or fat down your disposer or any drain. It can build up in pipes and cause drain blockages. Put grease in a jar or can and dispose in the trash.
- Don't use hot water when grinding food waste. It is OK to drain hot water into the disposer between grinding periods.
- Don't fill disposer with a lot of vegetable peels all at once. Instead, turn the water and disposer on first and then feed the peels in gradually.
- Don't grind extremely fibrous materials like corn husks, artichokes, etc., to avoid possible drain blockage.
- Don't turn off disposer until grinding is completed and only sound of motor and water is heard.
- Don't be alarmed if a brown discoloration appears on the face of the grinding disc. This is normal. It is surface discoloration only and will not affect the life or performance of the disposer.

### CAUTION

Regularly inspect disposer and plumbing fittings for water leaks, as water leaks can cause property damage. Manufacturer cannot be held responsible for property damage as a result of water leaks.

## USER-MAINTENANCE INSTRUCTIONS

### CLEANING DISPOSER

Over time, food particles may accumulate in the grind chamber and baffle. An odor from the disposer is usually a sign of grease and food buildup, caused by insufficient water flow during and after disposer use. To clean disposer:

1. Turn off disposer and disconnect power supply.
2. Reach through sink opening and clean underside of splash baffle and inside upper lip of grind chamber with scouring pad.
3. Place stopper in sink opening and fill sink halfway with warm water.
4. Mix 1/4 cup baking soda with water. Turn disposer on and remove stopper from sink at same time to wash away loose particles.

### RELEASING DISPOSER JAM

If the motor stops during operation, the disposer may be jammed. To release jam:

1. Turn off the disposer and water.
2. Insert one end of the self-service wrenchette into the center hole on the bottom of the disposer (see Figure C). Work the wrenchette back and forth until it turns one full revolution. Remove wrenchette.
3. Reach into the disposer with tongs and remove object(s). Allow the disposer motor to cool for 3 - 5 minutes and lightly push red reset button on the disposer bottom (see Figure C). (If the motor remains inoperative, check the service panel for tripped circuit breakers or blown fuses.)

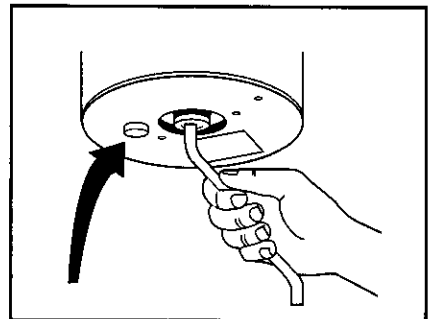


Figure C